

# Lot 20



**GRANITE POINTE**  
WATERFRONT COMMUNITY



2,713 SQ. FT.



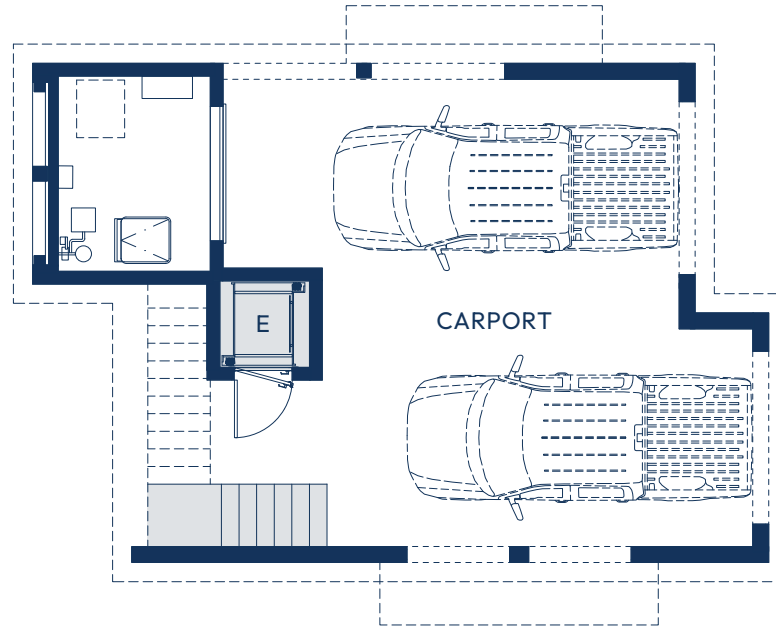
3



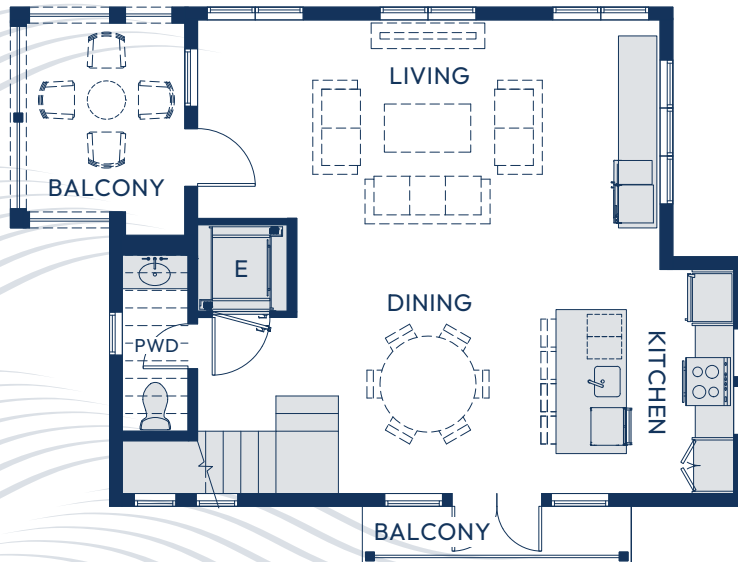
3 Full | 1 Half



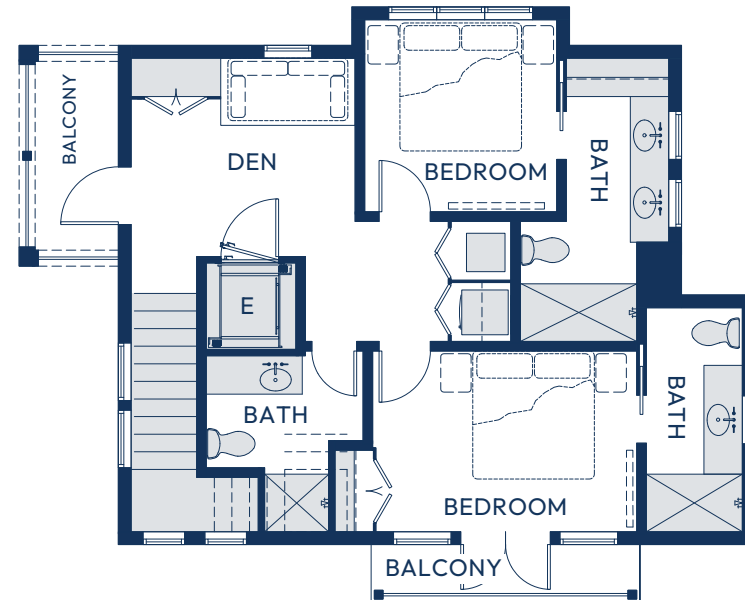
2 Car



FIRST LEVEL



SECOND LEVEL



THIRD LEVEL

100 POINTE VIEW DRIVE | GRANITE SHOALS, TX 78654



NOT FOR REGULATORY APPROVAL, PERMITTING OR CONSTRUCTION. All dimensions and square footage are approximate at Granite Pointe Waterfront Community and are subject to change without notice. Illustrations are artist's conception and not reproductions of original plans. All drawings, specifications and other documents prepared by Kissling Architecture, Inc. are instruments of service for use solely with respect to this project and shall not be used on other projects or for the completion of this project without the expressed written permission of Kissling Architecture, Inc., James G. Kissling, architect, shall be deemed author of these documents and shall retain all common law, statutory and other reserved rights, including copyrights.